



UNIVERSIDADE
ESTADUAL DO CEARÁ



GOVERNO DO
ESTADO DO CEARÁ
*Secretaria da Ciência, Tecnologia
e Educação Superior*

VI FÓRUM CHINA-AMÉRICA LATINA DE INOVAÇÃO E TECNOLOGIA
I SIMPÓSIO INTERNACIONAL DE INOVAÇÃO DO CEARÁ

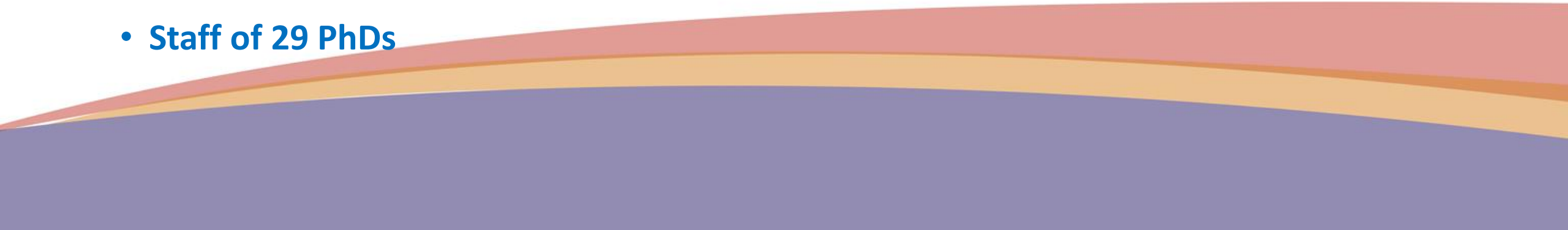
**CEARÁ STATE UNIVERSITY
INSTITUTE OF BIOMEDICAL SCIENCES
(ISCB-UECE)
RESEARCH & DEVELOPMENT CENTER**

INSTITUTE OF BIOMEDICAL SCIENCES

A Complete Equipment



ISCB-INFRASTRUCTURE

- 4800 m² complex bulding;
 - 12 Laboratories-Pharmacology and Experimental Therapeutics;
 - 2 Core Facilities;
 - 2 Cell Culture Rooms;
 - 3 seminar rooms and 1 Lecture room with vídeo conference facility;
 - 3 administrative rooms;
 - 1 electric power house, 2 water towers and 2 power generators (500 kVA)
 - Animal Research Facility (Rodent Vivarium)
 - Staff of 29 PhDs
- 

LABORATORIES

- ✓ ELECTROPHYSIOLOGY
 - ✓ RENAL PHARMACOLOGY
 - BIOPHYSICS AND PHARMACOLOGY OF THE PULMONARY SYSTEM
 - ENDOCRINE PHARMACOLOGY
 - CARDIOVASCULAR PHARMACOLOGY
 - NEUROPSYCHOPHARMACOLOGY
 - PHARMACOLOGY OF INFLAMMATION AND PAIN
 - MOLECULAR BIOLOGY AND GENETICS
 - ORGAN PERFUSION FOR TRANSPLANTS
 - PHARMACOLOGY OF ANTITHROMBOTIC DRUGS
 - SIGNAL TRANSDUCTION
- 

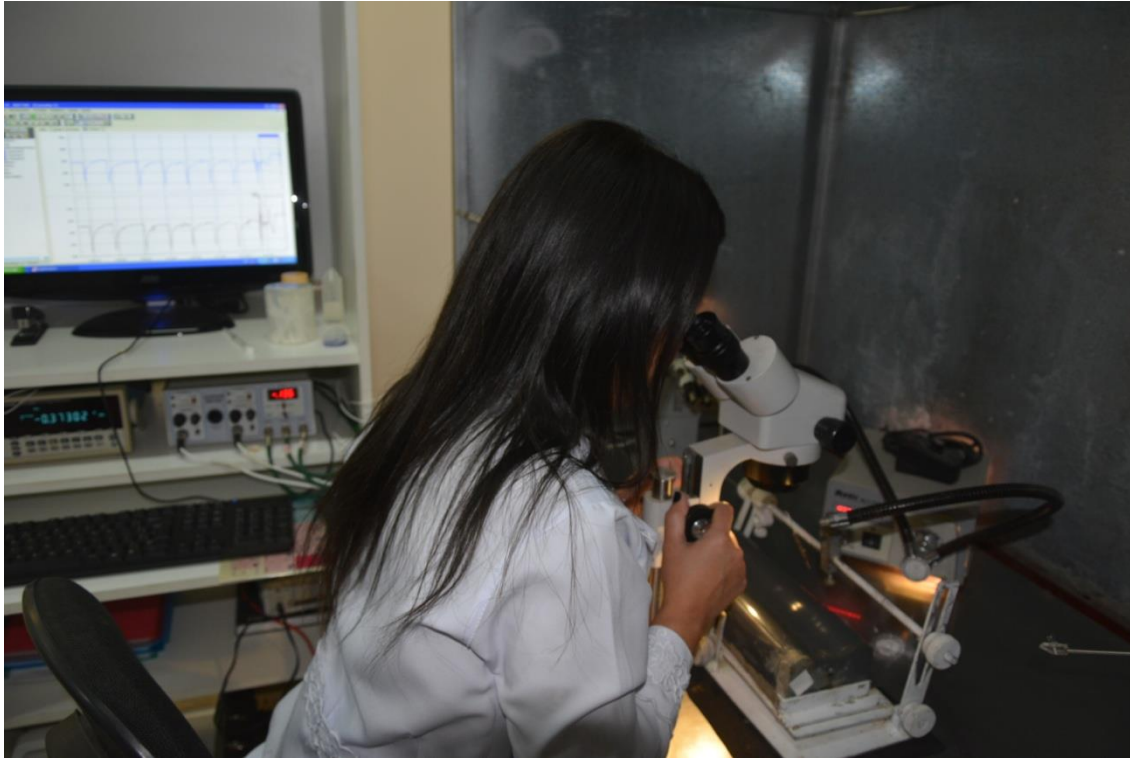
PURPOSE

- TRAIN YOUNG SCIENTISTS
 - CONDUCT PRECLINICAL STUDIES
–NEW DRUGS DEVELOPMENT
(RESOLUÇÃO Nº 466/2012-CNS -
LEI FEDERAL Nº 8.080/1990; LEI
FEDERAL Nº 8.142/1990)
 - CONDUCT SAFETY
PHARMACOLOGY STUDIES (ICH
S7A, ICH S7B-EMA; FDA AND
ANVISA-BRAZILIAN
REGULATORY AGENCY)
 - CONDUCT TOXICOLOGY
STUDIES
 - IDENTIFICATION OF NEW
THERAPEUTIC TARGETS/NEW
INDICATIONS
 - WORK WITH PARTNERS FROM
CONCEPTION TO CLINICAL
TRIALS
- 

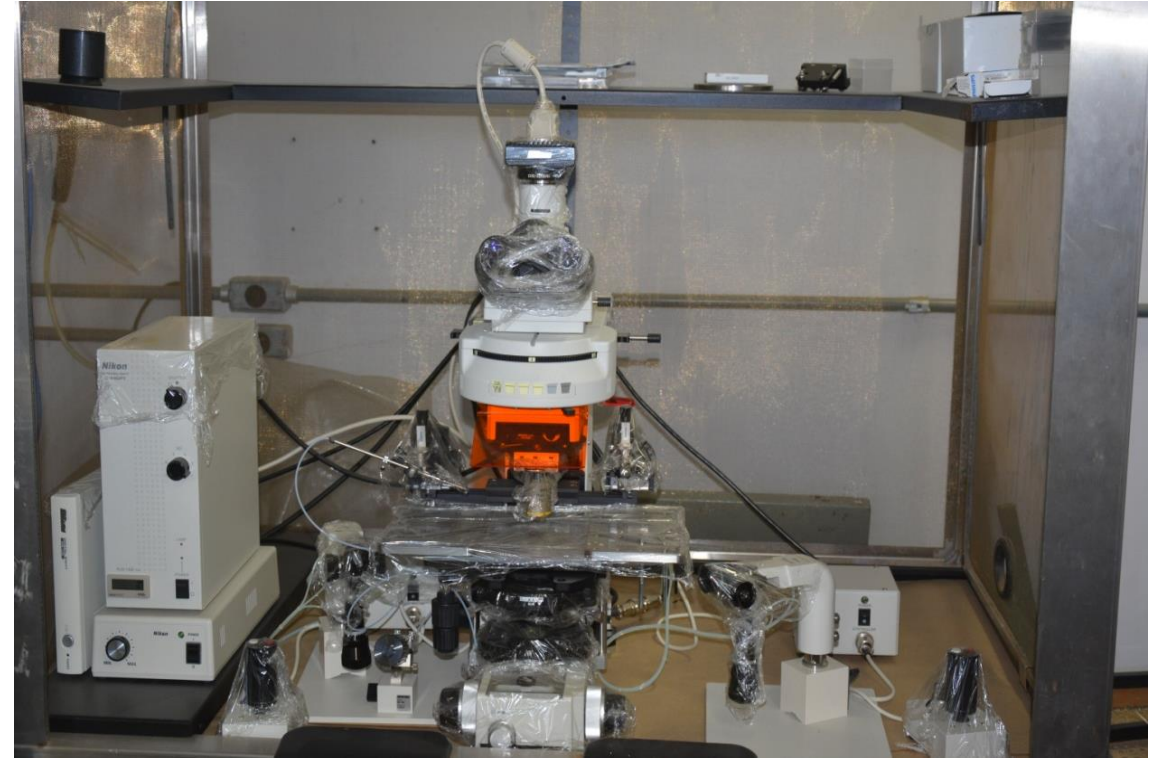
PARTNERS AND COLLABORATORS

- DIABETES AND HYPERTENSION CENTER
 - FORTALEZA GENERAL HOSPITAL-KIDNEY TRANSPLANT DIVISION
 - ORGANIC CHEMISTRY DEPARTMENT-ACTIVE COMPOUNDS FROM PLANTS
 - INORGANIC CHEMISTRY DEPARTMENT-SYNTHETIC COMPOUNDS
 - BIOMEDICAL INSTITUTE-UFC
 - UNIVERSITY OF SÃO PAULO BIOMEDICAL INSTITUTE
 - BIOMEDICAL INSTITUTE OF THE FEDERAL UNIVERSITY OF RIO DE JANEIRO
 - IRONWOOD PHARMA
- 

MAIN TECHNIQUES



Renal Microperfusion



Calcium Signaling

MAIN TECHNIQUES

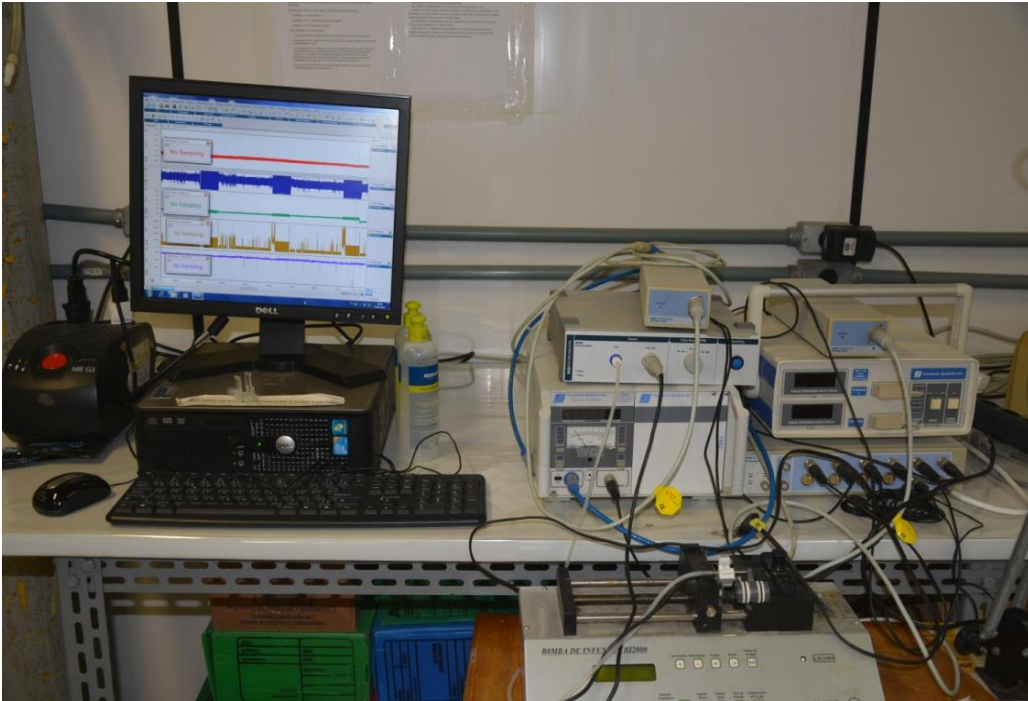


Microvessels Reactivity



Nerve Action Potential

MAIN TECHNIQUES



**Renal Hemodynamics and
tubular function**



**Systemic Hemodynamics and
Cardiac Electromechanics**

MAIN TECHNIQUES



**Patch-Clamp- Ion Channel
Studies**



**FlexVent- In Vivo Pulmonary
Pharmacology**

MAIN TECHNIQUES



**Cell Culture and Cell
Signaling Studies**



**Cell Signaling- ImunoBlots and
PCR**

MAIN TECHNIQUES

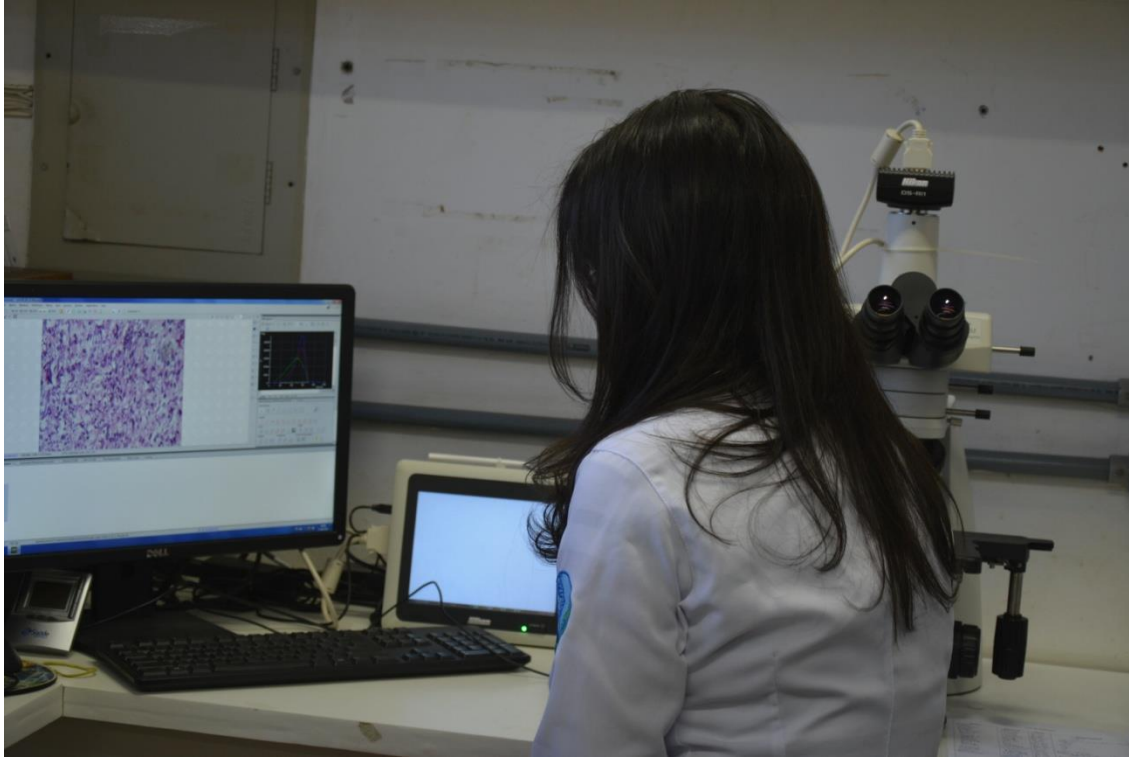


**Neuropathic Pain Study
Apparatus**



Microscopy

MAIN TECHNIQUES

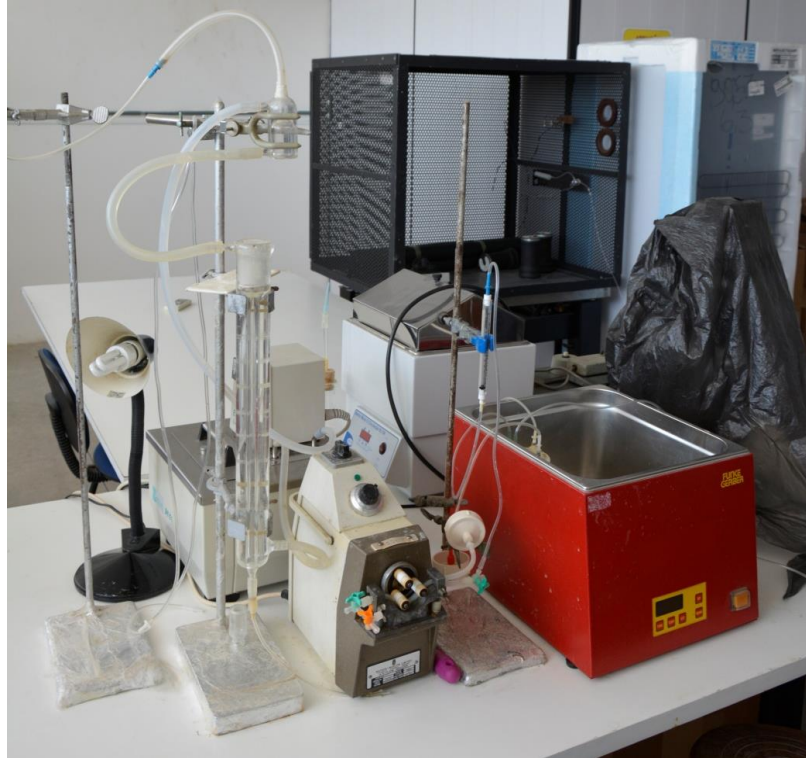


**Evaluation of the Pharmacology of
New AntiInflammatory Drugs**

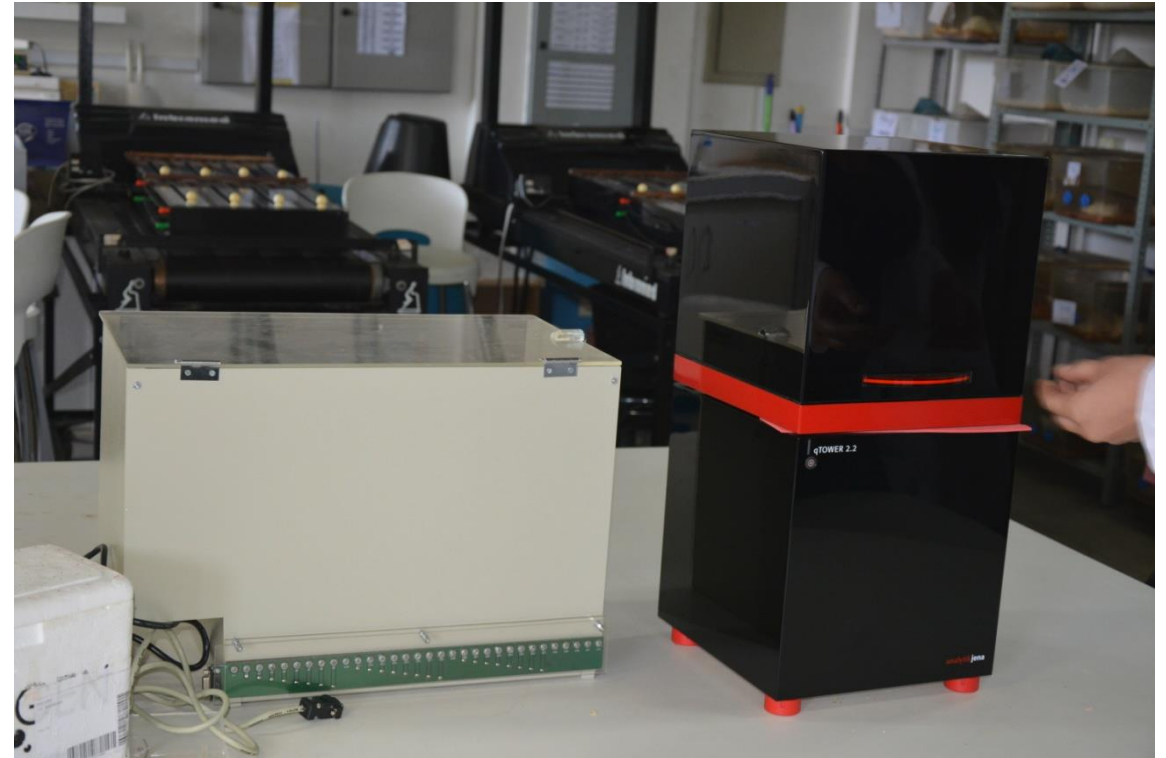


**Pharmacology in Isolated
Tissues-Organ Bath**

MAIN TECHNIQUES



Kidney Perfusion



Gene Expression

MAIN TECHNIQUES



**Telemetry-Chronic Evaluation
of Physiological Parameters
in Vivo**



**Ussing Chambers-Membrane
Permeability Studies**

ISCB
Instituto Superior de Ciências Biomédicas

SMALL RODENT VIVARIUM



THANK YOU!

**INSTITUTE OF BIOMEDICAL
SCIENCES**

Phone: +55 85 3101-9836

E-mail: iscb@uece.br

