

Are Metabolically Healthy Overweight and Obesity Benign Conditions?

A Systematic Review and Meta-analysis

Caroline K. Kramer, MD, PhD; Bernard Zinman, CM, MD; and Ravi Retnakaran, MD

Background: Recent interest has focused on a unique subgroup of overweight and obese individuals who have normal metabolic features despite increased adiposity. Normal-weight individuals with adverse metabolic status have also been described. However, it remains unclear whether metabolic phenotype modifies the morbidity and mortality associated with higher body mass index (BMI).

Purpose: To determine the effect of metabolic status on all-cause mortality and cardiovascular events in normal-weight, overweight, and obese persons.

Data Sources: Studies were identified from electronic databases.

Study Selection: Included studies evaluated all-cause mortality or cardiovascular events (or both) and clinical characteristics of 6 patient groups defined by BMI category (normal weight/overweight/obesity) and metabolic status (healthy/unhealthy), as defined by the presence or absence of components of the metabolic syndrome by Adult Treatment Panel III or International Diabetes Federation criteria.

Data Extraction: Two independent reviewers extracted the data. Metabolically healthy people of normal weight made up the reference group.

Data Synthesis: Eight studies ($n = 61\,386$; 3988 events) evaluated participants for all-cause mortality and/or cardiovascular events. Metabolically healthy obese individuals (relative risk [RR], 1.24; 95% CI, 1.02 to 1.55) had increased risk for events compared with metabolically healthy normal-weight individuals when only studies with 10 or more years of follow-up were considered. All metabolically unhealthy groups had a similarly elevated risk: normal weight (RR, 3.14; CI, 2.36 to 3.93), overweight (RR, 2.70; CI, 2.08 to 3.30), and obese (RR, 2.65; CI, 2.18 to 3.12).

Limitation: Duration of exposure to the metabolic–BMI phenotypes was not described in the studies and could partially affect the estimates.

Conclusion: Compared with metabolically healthy normal-weight individuals, obese persons are at increased risk for adverse long-term outcomes even in the absence of metabolic abnormalities, suggesting that there is no healthy pattern of increased weight.

Primary Funding Source: Intramural funds from the Leadership Sinai Centre for Diabetes.

Ann Intern Med. 2013;159:758–769.

For author affiliations, see end of text.

www.annals.org

Increased body mass index (BMI), particularly in the range classified as obesity ($\text{BMI} \geq 30 \text{ kg/m}^2$), has been associated with excess mortality risk (1–3). Recently, a meta-analysis of 2.88 million individuals found that grade 2 to 3 obesity ($\text{BMI} \geq 35 \text{ kg/m}^2$) was associated with higher all-cause mortality but that, paradoxically, overweight (BMI , 25 to 30 kg/m^2) was associated with lower all-cause mortality than normal weight (BMI , 18.5 to 25 kg/m^2) (4). These data highlight the complexity of the relationship between weight and mortality and suggest that additional factors, possibly metabolic, may affect the risk for death within BMI categories.

It is well recognized that individuals in the same BMI category can have substantial heterogeneity of metabolic features, such as lipid profile, glucose tolerance, blood pressure, and waist circumference. In this context, recent interest has focused on a unique subgroup of obese individuals with normal metabolic features despite their increased adiposity, a profile that has been described as “benign obesity” or “metabolically healthy obesity.” Similarly, a sub-

group of normal-weight individuals with adverse metabolic status has also been described (5–7). Previous reports on the effect of these metabolic–BMI phenotypes on morbidity and mortality have yielded contradictory results (8–10). In addition, the data from these individual studies might not be sufficient to demonstrate a possible differential risk for morbidity and death conferred by these phenotypes, which could hold important implications for targeted preventive strategies in practice. Thus, we conducted a systematic review and meta-analysis of observational studies to determine 1) the effect of metabolic status on risk for all-cause mortality and cardiovascular events in normal-weight, overweight, and obese persons and 2) the clinical characteristics of these metabolic–BMI phenotypes.

METHODS

This systematic review and meta-analysis is reported in accordance with the Meta-analysis of Observational Studies in Epidemiology guidelines (11) and is registered with the International Prospective Register of Systematic Reviews (CRD42013003607). The researchers are experienced in meta-analysis (12–18).

Data Sources and Searches

We selected relevant studies published between 1950 and 5 June 2013. We searched Embase, PubMed, and abstracts from the 2011 and 2012 meetings of the Endocrine Society and the European Society of Endocrinology.

See also:

Print

Editorial comment. 789

Summary for Patients. I-26

The following combined text and Medical Subject Heading (MeSH) terms were used: *body mass index*, *overweight*, *obesity* and *metabolic syndrome*. The complete PubMed search was as follows: ((“body mass index”[MeSH Terms] OR body mass index[Text Word]) OR (“overweight”[MeSH Terms] OR overweight[Text Word]) OR (“obesity”[MeSH Terms] OR obesity[Text Word])) AND (metabolic[All Fields] AND (“syndrome”[MeSH Terms] OR syndrome[Text Word])) AND (“mortality”[MeSH Terms] OR “survival rate” [Mesh Term] OR “cause of death” [Mesh Term]) OR (“Obesity”[Mesh]) AND benign [text]) OR (metabolically benign)). All potentially eligible studies were considered for review, regardless of primary outcome or language. A manual search was also performed by using references of key articles published in English.

Study Selection

Studies were considered eligible if they were conducted in adults; presented original prospective or cross-sectional data; evaluated participants according to 3 categories of BMI, defined as normal weight ($\text{BMI} \geq 18$ and $< 25 \text{ kg/m}^2$), overweight ($\text{BMI} \geq 25.0$ and $< 30 \text{ kg/m}^2$), and obesity ($\text{BMI} \geq 30 \text{ kg/m}^2$); evaluated participants within these BMI categories according to metabolic status (healthy/unhealthy); and reported all-cause mortality, fatal or nonfatal cardiovascular (CV) events, baseline characteristics, or all of these. As shown in Table 1, the classification of participants in these studies as metabolically unhealthy was based on the presence of metabolic syndrome components by criteria from the Adult Treatment Panel III (waist circumference $> 88 \text{ cm}$; fasting triglyceride level $> 1.69 \text{ mmol/L}$ [$> 150 \text{ mg/dL}$]; high-density-lipoprotein [HDL] cholesterol level $< 1.29 \text{ mmol/L}$ [$< 50 \text{ mg/dL}$]; systolic blood pressure $> 130 \text{ mm Hg}$, diastolic blood pressure $> 85 \text{ mm Hg}$, or use of antihypertensive medication; fasting glucose level $\geq 6.1 \text{ mmol/L}$ [$\geq 110 \text{ mg/dL}$]) (19) or International Diabetes Federation (waist circumference $\geq 94 \text{ cm}$ in men or $\geq 80 \text{ cm}$ in women; fasting triglyceride level $> 1.69 \text{ mmol/L}$ [$\geq 150 \text{ mg/dL}$]; HDL cholesterol level $< 1.04 \text{ mmol/L}$ [$< 40 \text{ mg/dL}$] in men or $< 1.29 \text{ mmol/L}$ [$< 50 \text{ mg/dL}$] in women; systolic blood pressure $\geq 130 \text{ mm Hg}$, diastolic blood pressure $\geq 85 \text{ mm Hg}$, antihypertensive medication, or history of hypertension; fasting glucose level $\geq 5.6 \text{ mmol/L}$ [$\geq 100 \text{ mg/dL}$] or glucose-lowering medication) (20). In addition, 2 studies (5, 21) assessed insulin resistance and inflammatory markers as part of the definition of metabolic status. Fatal and nonfatal CV events were defined as death due to CV disease or one of the following: myocardial infarction, the acute coronary syndrome, hospitalization for unstable angina or coronary catheterization that resulted in angioplasty or coronary artery bypass surgery, congestive heart failure, stroke, transient ischemic attack, and claudication.

We compared the number of events in individuals who were metabolically healthy and overweight, metaboli-

cally healthy and obese, metabolically unhealthy and normal weight, metabolically unhealthy and overweight, and metabolically unhealthy and obese (5 exposure groups) with the number of events in metabolically healthy people of normal weight (control group). We excluded studies that were retrospective, evaluated participants by using different thresholds for BMI categories, did not stratify participants into the preceding 6 groups, and did not provide any source of absolute number of events per group.

Data Extraction and Quality Assessment

Two independent investigators reviewed study titles and abstracts. Studies that satisfied the inclusion criteria were retrieved for full-text evaluation. Studies selected for detailed analysis by these 2 investigators had an agreement value (κ) of 97%; the third investigator resolved disagreements.

Extracted data included clinical characteristics of participants, study design, duration of follow-up, and the number of participants who had an event according to BMI categories and metabolic status. Numerical data appearing in the articles were used. In the few studies that did not report these data, risk estimates were calculated from the survival curves. Unadjusted estimates were extracted, enabling inclusion of the maximum number of studies. Authors of studies with specific information missing were contacted by e-mail.

The Newcastle–Ottawa Scale (NOS) for assessing quality of nonrandomized studies in meta-analysis was applied (22). The NOS contains 8 items categorized into 3 domains (selection, comparability, and exposure). For each item, a series of response options is provided. A star system is used to enable semi-quantitative assessment of study quality, such that the highest-quality studies are awarded a maximum of 1 star per item; the exception is the comparability domain, which allows the assignment of 2 stars. As such, the NOS ranges from 0 to 9 stars (23).

Data Synthesis and Analysis

An overall relative risk (RR) was calculated to assess the risk for all-cause mortality or CV events (fatal and nonfatal). The risk for events among metabolically healthy overweight, metabolically healthy obese, metabolically unhealthy normal-weight, metabolically unhealthy overweight, and metabolically unhealthy obese individuals was determined in comparison with risk among metabolically healthy normal-weight people. In addition, baseline clinical characteristics were compared (waist circumference, systolic and diastolic blood pressure, HDL lipoprotein cholesterol level, low-density lipoprotein [LDL] cholesterol level, triglyceride level, glucose level, and Homeostasis Model Assessment of Insulin Resistance score [24]).

We calculated pooled estimates of the RR risk by using a random-effects model (profile likelihood method). The likelihood approach with random effects was used to better account for the imprecision in the estimate of between-study variance (25). The Cochran Q test was used

Table 1. Characteristics of Included Studies

Study, Year (Reference)	Sample Size	Baseline CVD	Mean Age, y	Men, %
Kip et al, 2004 (47)	780 women referred for coronary angiography for suspected myocardial ischemia	37% with previous CVD	58	0
Meigs et al, 2006 (8)	2902 participants without diabetes or CVD	None	53	45
Song et al, 2007 (48)	25 626 women aged ≥ 45 y without diabetes or CVD (Women's Health Study)	None	55	0
Wildman et al, 2008 (5)	5440 participants of NHANES 1999–2004	None	45	47.9
Kuk and Ardern, 2009 (49)	6011 participants of NHANES	20% with previous CVD	45	48
Arnlöv et al, 2010 (9)	1758 men without diabetes at age 50 y	None	49.7	100
Hosseinpanah et al, 2011 (50)	6215 participants aged ≥ 30 y without CVD	None	47.5	43.1
Lind et al, 2011 (51)	985 participants aged 70 y	10% with previous CVD	70	52
Pajunem et al, 2011 (52)	2849 participants	NA	59.5	47
Shea et al, 2011 (21)	1907 participants	None	44	23
Voulgari et al, 2011 (10)	550 without diabetes or CVD	None	56.5	55
Ogorodnikova et al, 2011 (53)	17 544 participants	None	56.5	35

ATP = Adult Treatment Panel; CVD = cardiovascular disease; HDL = high-density lipoprotein; NA = not available; NHANES = National Health and Nutrition Examination Survey.

to evaluate heterogeneity between studies (26). I^2 testing was performed to evaluate the magnitude of heterogeneity between studies, with values greater than 50% indicating moderate to high heterogeneity (27).

We explored heterogeneity between studies by using 2 strategies. First, we reran the meta-analysis, removing each study one at a time to determine whether a particular study accounted for the heterogeneity. Second, meta-regression analyses were carried out. Using random-effects univariate meta-regression models, we assessed clinical and methodological variables that influenced the association of phenotypes and outcomes. The adjusted R^2 , which denotes the proportion of between-study variation explained by a covariate, was used to evaluate the influence of the covariate on the between-studies variance. Finally, we performed sensitivity analyses to evaluate subgroups of studies most likely to yield valid estimates.

We performed further analyses that included only studies with at least 10 years of follow-up to compare the metabolically healthy overweight and metabolically healthy obese groups to the reference group. This approach allows a longer time for the occurrence of events, which is the most appropriate strategy in evaluating a low-risk population.

The possibility of publication bias was evaluated by using a funnel plot of effect size against the SE for each trial. Funnel plot asymmetry was evaluated by the Peters

test, with significant publication bias defined as a P value less than 0.1 (28, 29). All statistical analyses were performed by using Stata software, version 11.0 (Stata Corp., College Station, Texas).

Role of the Funding Source

The funding source had no role in study design, data collection, data analysis, data interpretation, or writing of the report.

RESULTS

We identified 1443 studies through electronic searches and 12 through manual searches (Appendix Figure 1, available at www.annals.org), all published in English. Eighteen publications were excluded after full-text evaluation, of which 17 reported original studies (Appendix Table 1, available at www.annals.org) (30–46). Twelve studies fulfilled inclusion criteria ($n = 67\ 127$) (5, 8–10, 21, 47–53).

Study Characteristics

Table 1 summarizes the included studies. Metabolic status was defined by Adult Treatment Panel III criteria in 8 studies (8–10, 47–49, 51, 53), International Diabetes Federation criteria in 2 studies (50, 52), and additional assessment of insulin resistance and inflammatory markers in 2 studies (5, 21). Of note, 7 of the 8 longitudinal studies defined metabolic status using Adult Treatment Panel III

Table 1—Continued

Current Smoking, %	Design	Follow-up, y	Primary Outcome	Definition of Metabolically Healthy
20	Prospective observational study	3	All-cause mortality	Absence of the metabolic syndrome as defined by ATP III criteria
18.6	Prospective observational study	11	CVD (fatal and nonfatal myocardial infarction, heart failure, stroke, or claudication)	Absence of the metabolic syndrome as defined by ATP III criteria
11	Interventional trial followed by prospective observational study	10	CVD (fatal and nonfatal myocardial infarction, stroke)	Absence of the metabolic syndrome as defined by ATP III criteria
23	Cross-sectional observational study	NA	NA	<2 abnormalities: elevated triglyceride, glucose, and C-reactive protein levels; decreased HDL cholesterol levels; insulin resistance; and hypertension
32.1	Prospective observational study	8.7	All-cause mortality	<2 metabolic components as defined by ATP III criteria
51.5	Prospective observational study	30	All-cause mortality	Absence of the metabolic syndrome as defined by ATP III criteria
14.2	Prospective observational study	8.1	Cardiovascular disease (fatal and nonfatal myocardial infarction, stroke)	Absence of the metabolic syndrome as defined by the International Diabetes Federation
10	Cross-sectional observational study	NA	NA	Absence of the metabolic syndrome as defined by ATP III criteria
15	Cross-sectional observational study	NA	NA	Absence of the metabolic syndrome as defined by the International Diabetes Federation
NA	Cross-sectional observational study	NA	NA	<2 abnormalities: elevated triglyceride, glucose, and C-reactive protein levels; decreased HDL cholesterol levels; insulin resistance; and hypertension
12	Prospective observational study	6	Heart failure	Absence of the metabolic syndrome as defined by ATP III criteria
30	Prospective observational study	15	CVD (fatal and nonfatal myocardial infarction, stroke)	Absence of the metabolic syndrome as defined by ATP III criteria

criteria. Of the 8 longitudinal studies, 3 evaluated all-cause mortality as the outcome and 5 evaluated only CV events. In all 8 studies, the outcome evaluated in our meta-analysis was the primary aim. Overall, 3988 events (all-cause mortality plus fatal and nonfatal CV events) were reported. Of the 8 studies that evaluated incidence of CVD and death, 6 evaluated only participants without CVD at baseline and the other 2 had prevalence of previous CVD of 37% and 20%, respectively (47, 49). All were prospective observational studies, although the Women's Health Study had an initial interventional phase (48). In these 8 studies, the proportion of current smokers ranged from 11% to 51%; 5 evaluated physical activity (10, 47–50) and reported that their populations had an overall moderate degree of activity (although assessed by different scales).

Four studies were cross-sectional reports providing data only on baseline characteristics (5, 21, 51, 52). Two studies evaluated participants from the National Health and Nutrition Examination Survey (5, 49). Because they overlap in study population, we included only Wildman and colleagues' study (5) in the analyses of prevalence and characteristics and included only Kuk and Arden's study (49) in the analyses of all-cause mortality and CV events.

An evaluation of the included studies for possible bias is shown in **Appendix Table 2** (available at www.annals.org). In accordance with the NOS quality assessment scale, all prospective studies achieved at least 6 stars, indicating overall good quality.

Eleven studies ($n = 66\,556$) evaluated participants according to BMI categories and metabolic status. **Appendix Table 3** (available at www.annals.org) shows the distribution of participants in each category of BMI and metabolic status. When we pooled the data from the studies, 6.0% of participants had metabolically unhealthy normal weight and 8.9% had metabolically healthy obesity (**Appendix Figure 2**, available at www.annals.org). Eight studies ($n = 61\,386$; 3988 events) evaluated all-cause mortality or CV events, enabling assessment of the effect of BMI–metabolic phenotype on these outcomes.

Effect of BMI Categories in Metabolically Healthy Individuals Overweight

In a pooled analysis of 7 studies, metabolically healthy overweight individuals had a similar risk for all-cause mortality or CV events compared with metabolically healthy normal-weight persons (RR, 1.10; CI, 0.90 to 1.24) (**Figure 1, A**), although significance was almost reached. The heterogeneity was not significant in the individual estimates when the magnitude of association was evaluated ($I^2 = 0\%$; $P = 0.065$), and there was no evidence of publication bias on the Peter regression test ($P = 0.59$). Recognizing the long-term course generally required for manifestation of CV risk, we repeated this analysis with restriction to studies that had at least 10 years of follow-up. This analysis demonstrated a similar occurrence of events

in metabolically healthy overweight individuals compared with metabolically healthy normal-weight persons in studies with long-term follow-up (RR, 1.21; 95% CI, 0.91 to 1.61; $I^2 = 70\%$) (Figure 1, B).

Obesity

In a pooled analysis of 8 studies, metabolically healthy obese persons had a similar risk for all-cause mortality or CV events compared with the metabolically healthy normal-weight individuals (RR, 1.19; CI, 0.98 to 1.38) (Figure 1, C). Heterogeneity was not significant in the individual estimates when the magnitude of association was evaluated ($I^2 = 15.1\%$; $P = 0.148$), and there was no evidence of publication bias on the Peter regression test ($P = 0.79$). However, after we restricted analysis only to studies with at least 10 years of follow-up, the metabolically healthy obese group indeed had increased mortality and CV risk compared with the metabolically healthy normal-weight group (RR, 1.24; CI, 1.02 to 1.55; $I^2 = 33.6\%$) (Figure 1, D). These data indicate that, with long-term follow-up, metabolically healthy obesity is associated with increased mortality and CV risk.

Effect of BMI Categories in Metabolically Unhealthy Individuals

Normal Weight

In pooled analysis of 8 studies, the metabolically unhealthy normal weight group had increased risk for all-cause mortality or CV events compared with metabolically healthy normal-weight persons (RR, 3.14; CI, 2.36 to 3.93) (Figure 2, A). All but 1 study reported a significant difference between the groups. However, there was significant heterogeneity in the individual estimates when the magnitude of association was evaluated ($I^2 = 97.1\%$; $P < 0.001$), with no evidence of publication bias on the Peter regression test ($P = 0.62$).

We reran the meta-analysis, excluding each study one at a time to determine whether a particular study was responsible for the heterogeneity. No individual study was responsible for the heterogeneity. We then performed a meta-regression analysis in an exploratory attempt to identify the sources of heterogeneity. In univariate meta-regression models, we evaluated the following covariates: duration of follow-up, proportion of current smokers, age, and sex. Duration of follow-up ($R^2_a = 50.7\%$; $P = 0.04$) and proportion of smokers ($R^2_a = 81.9\%$; $P = 0.002$) were associated with the between-study variance. Considering all of these exploratory analyses together, we performed a sensitivity analysis that excluded the 3 studies with a 30% or greater proportion of smokers (9, 49, 53). In a pooled analysis of the remaining 5 studies, the RR for all-cause mortality or CV events comparing metabolically unhealthy normal-weight persons to metabolically healthy normal-weight persons was 3.79 (CI, 3.19 to 4.34). This approach reduced the heterogeneity between individual efficacy estimates ($I^2 = 77.7\%$) but did not eliminate it. In addition, we performed a sensitivity analysis excluding the

3 studies with the highest base rates (9, 10, 47), but the heterogeneity remained.

Overweight

In a pooled analysis of 7 studies, the metabolically unhealthy overweight group had an increased risk for all-cause mortality or CV events compared with the reference group (RR, 2.70; CI, 2.08 to 3.30) (Figure 2, B). There was significant heterogeneity in the individual estimates ($I^2 = 96\%$; $P < 0.001$), with no evidence of publication bias on the Peter regression test ($P = 0.99$).

In an exploratory attempt to identify the sources of heterogeneity between studies, we performed the same sequential approaches as described previously. The study of Arnlöv and colleagues (9) fully explained the heterogeneity; in univariate meta-regression models, duration of follow-up ($R^2_a = 68.5$; $P = 0.05$) and proportion of current smokers ($R^2_a = 68.4$; $P = 0.03$) were the covariates associated with the between-study variance in univariate meta-regression. Thus, a sensitivity analysis was performed by excluding the study of Arnlöv and colleagues, which had the longest follow-up and highest proportion of smokers (9). In pooled analysis of the remaining 6 studies, the RR for all-cause mortality or CV events comparing the metabolically unhealthy overweight individuals to the reference group was 3.09 (CI, 2.80 to 3.25). This approach eliminated the heterogeneity between the individual efficacy estimates ($I^2 = 10.8\%$).

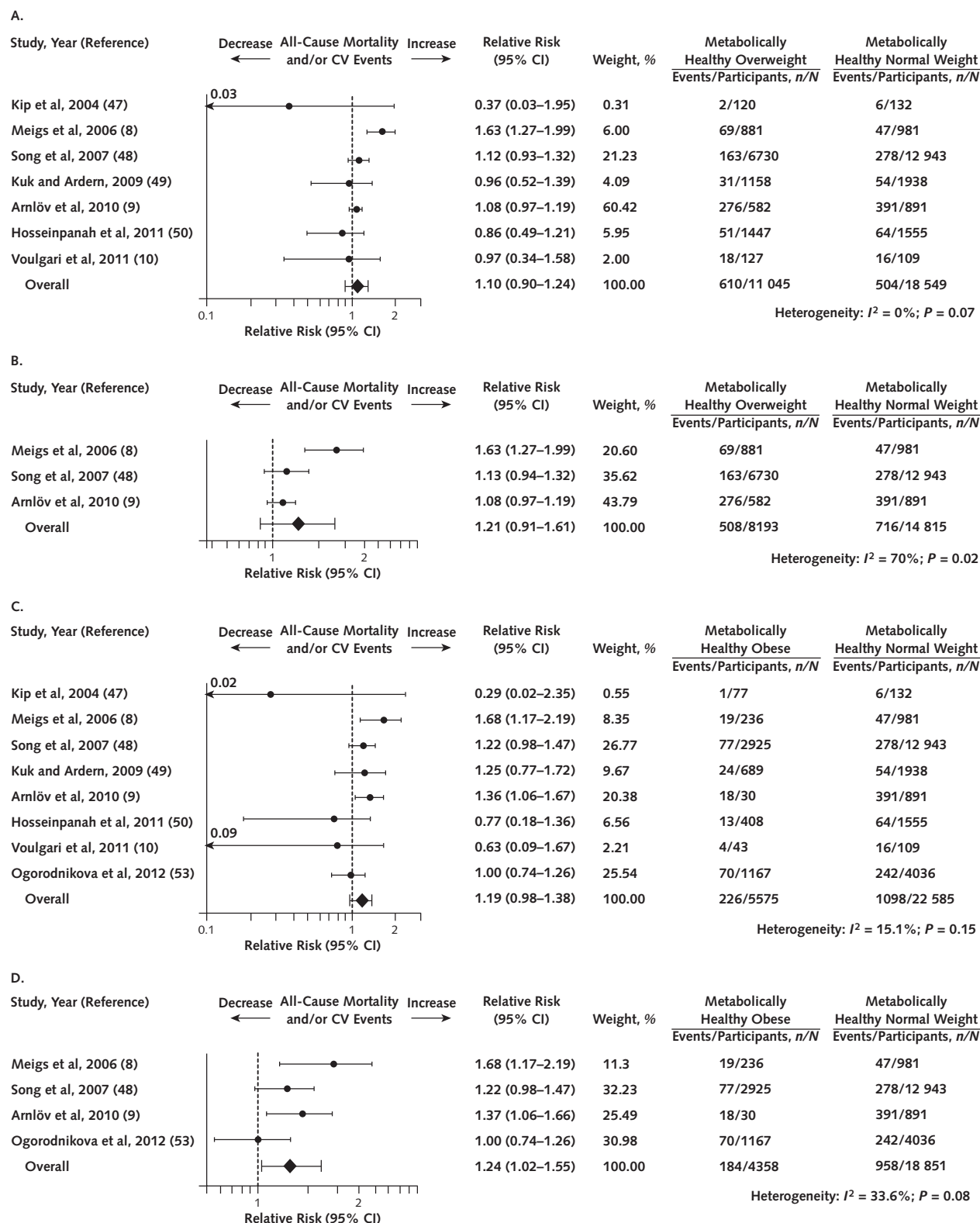
Obesity

In a pooled analysis of 8 studies, the metabolically unhealthy obese group had increased risk for all-cause mortality or CV events compared with the metabolically healthy normal-weight group (RR, 2.65; CI, 2.18 to 3.12) (Figure 2, C). All but 1 study reported a significant difference between groups. Again, there was significant heterogeneity in individual estimates ($I^2 = 95\%$; $P < 0.001$). There was no evidence of publication bias ($P = 0.100$).

As was seen for the analyses of metabolically unhealthy normal-weight individuals, exclusion of the 3 studies with proportion of smokers 30% or greater (9, 49, 53) reduced the heterogeneity ($I^2 = 88\%$) but did not eliminate it. However, when we performed a sensitivity analysis excluding the 3 studies with the highest base rates (9, 10, 47), the heterogeneity was reduced to 55.3%. In a pooled analysis of the remaining 5 studies, the relative risk for all-cause mortality or CV events comparing the metabolically unhealthy obese group to the reference group was 2.79 (CI, 2.56 to 3.01).

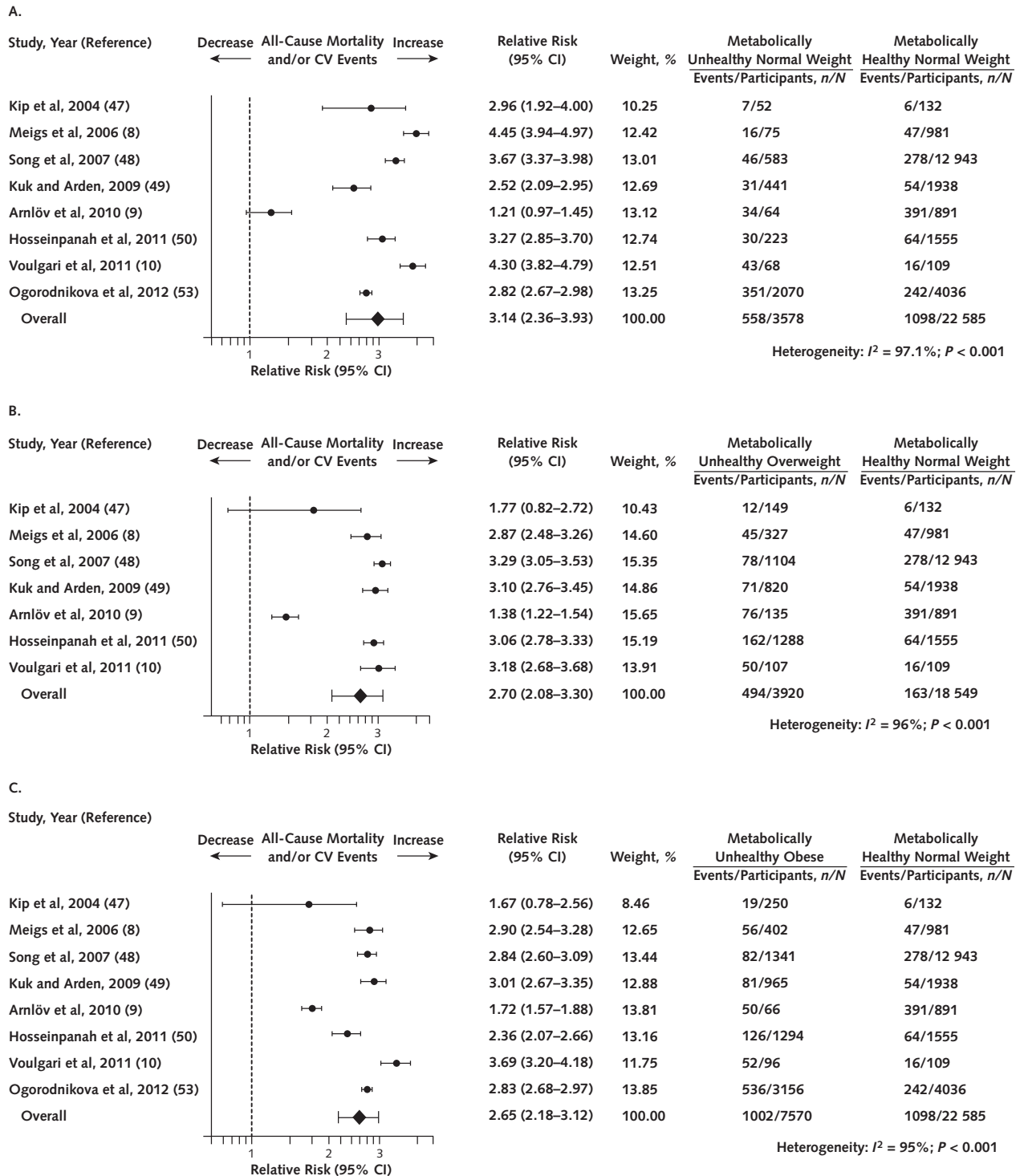
Having established that all metabolically unhealthy phenotypes had increased mortality compared with the metabolically healthy normal-weight group, we noted that the risk for events conferred by metabolically unhealthy normal weight was similar to that of both the metabolically unhealthy obese and overweight groups. Thus, we performed sensitivity analyses directly comparing metaboli-

Figure 1. Meta-analyses of metabolically healthy body mass index categories for the risk for all-cause mortality and cardiovascular events compared with metabolically healthy normal-weight persons (reference).



A. Metabolically healthy overweight group. B. Metabolically healthy overweight group, including only studies with at least 10 y of follow-up. C. Metabolically healthy obese group. D. Metabolically healthy obese group, including only studies with at least 10 y of follow-up. CV = cardiovascular.

Figure 2. Meta-analyses of metabolically unhealthy body mass index categories for the risk for all-cause mortality and cardiovascular events compared with metabolically healthy normal-weight persons (reference).



A. Metabolically unhealthy normal-weight group. B. Metabolically unhealthy overweight group. C. Metabolically unhealthy obese group. CV = cardiovascular.

Table 2. Absolute Incidence of Events per Year of Follow-up, by Body Mass Index Category and Metabolic Status

Study, Year (Reference)	Normal Weight, %		Overweight, %		Obese, %	
	Metabolically Healthy	Metabolically Unhealthy	Metabolically Healthy	Metabolically Unhealthy	Metabolically Healthy	Metabolically Unhealthy
Kip et al, 2004 (47)	1.51	4.48	0.55	2.68	0.43	2.53
Meigs et al, 2006 (8)	0.43	1.94	0.71	1.25	0.73	1.27
Song et al, 2007 (48)	0.21	0.79	0.24	0.70	0.26	0.61
Kuk and Ardern, 2009 (49)	0.32	0.80	0.30	0.99	0.40	0.96
Amlöv et al, 2010 (9)	1.46	1.77	1.58	2.02	2.00	2.52
Hosseinpanah et al, 2011 (50)	0.50	1.66	0.43	1.55	0.39	1.20
Voulgari et al, 2011 (10)	2.45	10.54	2.36	7.78	1.55	9.02
Ogorodnikova et al, 2011 (53)	0.39	1.13	Not available	Not available	0.39	1.13

cally unhealthy normal-weight persons with these groups. The metabolically unhealthy normal-weight group had risk for all-cause mortality and CV events similar to that of the metabolically unhealthy obese group, which, in theory, is the highest-risk group (RR, 1.12; CI, 0.92 to 1.37) (**Appendix Figure 3, A** [available at www.annals.org]). Furthermore, the metabolically unhealthy normal-weight individuals had similar mortality and CV risk compared with metabolically unhealthy overweight persons (RR, 1.13; CI, 0.93 to 1.37) (**Appendix Figure 3, B**). In addition, 2 sensitivity analyses were performed: 1) Because Kip and colleagues' study (47) had the highest proportion of participants with previous CVD, we excluded this study from the meta-analysis and confirmed that the results did not change (data not shown); and 2) because Hosseinpanah and colleagues' study (50) was the only longitudinal study that defined metabolic status using International Diabetes Federation criteria, we performed a sensitivity analysis excluding this study and confirmed that the results did not change (data not shown).

Table 2 presents the absolute incidence of events per year of follow-up by BMI and metabolic status and shows that these rates varied widely between studies (including 10-fold differences within some categories). Because differences in the incidence of events between metabolically healthy obese and metabolically healthy normal-weight persons were evident only after 10 years, the risk for events is probably not linear over time. Thus, to estimate the incremental absolute risk conferred by metabolically healthy obesity, we pooled data from the 2 studies with the most similar follow-up of 10 to 11 years (8, 48) and observed an absolute risk increase of 0.7% during this time.

Clinical Characteristics According to BMI Category and Metabolic Status

Having established that both BMI and metabolic status confer risk for death and CV events, we next sought to compare baseline clinical characteristics between the BMI–metabolic categories in the 8 studies that provided such data ($n = 62\,355$). **Figure 3** shows the weighted mean difference of each clinical characteristic compared with the metabolically healthy normal-weight group. In both the

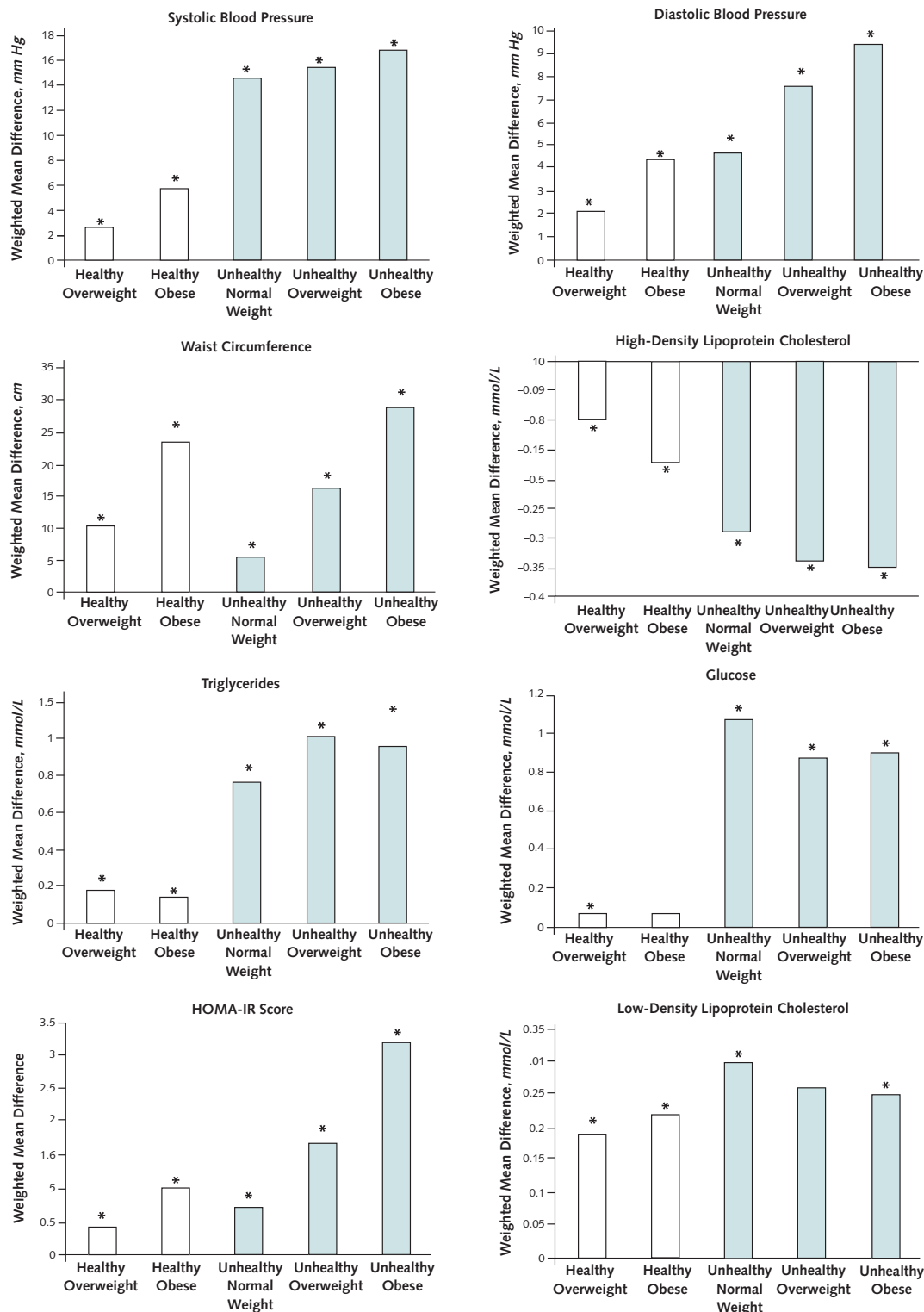
metabolically healthy and unhealthy strata, there was a stepwise increase in systolic blood pressure, diastolic blood pressure, waist circumference, and Homeostasis Model Assessment of Insulin Resistance from normal weight to overweight to obesity. In other words, when we compared persons with the same metabolic status (healthy or unhealthy), those with higher BMI had increased levels of each of these risk factors. A similar inverse association was observed for HDL cholesterol. In contrast, this BMI gradient was not evident for triglycerides, glucose, and LDL cholesterol.

DISCUSSION

This study yields 3 key findings. First, compared with metabolically healthy normal-weight persons, metabolically healthy obese individuals are at increased risk for all-cause mortality and CV events over the long term (≥ 10 years). Second, all phenotypes with unhealthy metabolic status present increased risk, regardless of normal weight, overweight, or obesity. Third, blood pressure, waist circumference, and insulin resistance increased, and HDL cholesterol decreased, across the BMI categories in both metabolically healthy and unhealthy subgroups.

Previous meta-analyses evaluating BMI and mortality have not considered the presence of metabolic factors, although excess mortality was already evident for obese individuals in some reports (3, 54). Of interest, a recent meta-analysis observed an increased risk for grade 2 to 3 obesity as opposed to grade 1 (BMI, 30 to 35 kg/m²) (4). In addition, in that study, overweight was associated with lower mortality (4). In contrast, our analyses showed that obese individuals have an increased risk for death and CV events over the long-term regardless of metabolic status, and that metabolically unhealthy overweight is also associated with these adverse outcomes. One possible explanation for the conflicting results reported in the earlier meta-analysis (4) is that the control group in that study included individuals with normal weight, who could be metabolically healthy or unhealthy. Considering our results demonstrate that metabolically unhealthy normal-weight individuals have an increased risk for events equal to that of

Figure 3. Meta-analyses of various clinical characteristics, by metabolic–body mass index categories.



Data shown as weighted mean difference compared with metabolically healthy normal-weight persons (reference). To convert cholesterol, triglyceride, and glucose values to traditional units (mg/dL), divide by 0.0259, 0.0113, and 0.0555, respectively. HOMA-IR = Homeostasis Model Assessment of Insulin Resistance.

* $P < 0.05$.

metabolically unhealthy obese persons, studies that grouped all normal-weight individuals as the reference are indeed including a high-risk population in the control group, which could bias results and conclusions. Our findings highlight the need for comprehensive evaluation of not only BMI but also metabolic factors for prediction of future morbidity and mortality. Thus, it is essential that the reference group in studies evaluating BMI phenotypes should be metabolically healthy and of normal weight.

It is also important to recognize that duration of follow-up is a critical element in evaluating low-risk populations for future events. In the study of Arnlöv and colleagues, (9) which had the longest follow-up (30 years), an increased incidence of CV events in metabolically healthy obese and overweight participants emerged only after about 10 years. Similarly, a previous report (45) observed that individuals with metabolically healthy obesity had an increased risk for incident hypertension that was not apparent after 4 years of follow-up; it emerged only after 8 years. Although these clinical outcomes occurred only after long-term follow-up, it should be noted that, regardless of metabolic status, excess weight is associated in the short term with subclinical vascular disease, including impaired vasoreactivity (51), abnormalities in left ventricular measures (41, 51), chronic inflammation (42, 44), and increased carotid artery intima-media thickness and coronary calcification (33, 40).

Thus, taken together, these data suggest a model in which excess weight is associated initially with the development of subclinical metabolic and vascular dysfunction that ultimately leads to an increased incidence of CV events and mortality over the long term. In this regard, previous reports that evaluated metabolically healthy obese individuals over short-term follow-up (10, 43) or that compared these individuals with control groups not fully characterized for CV risk (43) might have contributed to the concept of a “benign obesity” phenotype that is not associated with adverse outcomes. Our results do not support this concept and show that there is no “healthy” pattern of obesity. Even within the same category of metabolic status (healthy or unhealthy), we show that certain CV risk factors (blood pressure, waist circumference, low HDL cholesterol level, insulin resistance) progressively increase from normal weight to overweight to obese. This finding again argues against the notion that increased BMI can be harmless. Furthermore, considering a worldwide prevalence of approximately 200 million people with metabolically healthy obesity (55), the absolute risk increase of 0.7% over 10 to 11 years associated with this condition (as compared with metabolically healthy normal-weight persons) translates to 1.4 million incident deaths or CV events over this time.

Particular attention should be given to individuals with metabolic unhealthy status despite normal weight. Indeed, this group had a similar rate of events as that in their metabolically unhealthy overweight and obese peers. A

possible explanation is that this group might represent the most severe subtype along the phenotypic spectrum of individuals genetically predisposed to CV disease, such that they have unfavorable metabolic features, even without excess weight. This concept is supported by the surprising observation that this group had the highest weighted mean difference in LDL cholesterol and glucose levels compared with the metabolically healthy normal-weight group (even higher than their metabolically unhealthy overweight and obese peers) (Figure 3).

Strengths of this study include a large sample size that has been well characterized with respect to both BMI and metabolic factors, enabling the determination of robust estimates for the risks associated with 6 BMI-metabolic categories. A limitation is that most studies did not consider the use of medications (antihypertensive or lipid-lowering agents) that could interfere with the estimated risk for events. Nevertheless, because all studies were performed after 2004, we believe that patients were probably treated similarly on the basis of current clinical practice recommendations. In addition, duration of exposure to the current BMI and metabolic factors and longitudinal changes in BMI and metabolic status were not described in the studies and could partially affect the estimates. However, considering the challenges in reducing weight and the effect of aging on the incidence of metabolic disease, the transition of individuals to higher weight categories (that is, normal weight/overweight to obese) is more likely than the transition to lower weight categories (that is, obese to overweight/normal weight). Thus, the potential confounding effect of longitudinal changes in weight and metabolic status in our analyses was probably conservative, insofar as differences in the incidence of events might have been greater if persistently healthy normal-weight persons made up the control group. Another limitation is that analyses on obesity subgroups (grades 1 to 3) could not be performed because of the paucity of such data.

Two important limitations in our statistical analyses also need to be considered. First, we have pooled unadjusted estimates in this meta-analysis; thus, we did not account for other covariates possibly associated with mortality, such as physical activity and, most important, smoking. In this regard, we note that the proportion of current smokers was higher among persons of normal weight than among overweight or obese individuals in 7 of 8 longitudinal studies (8–10, 47, 48, 50, 53), rendering the potential confounding effect of smoking probably less relevant to our results. Second, our exploratory analyses could not fully explain the significant heterogeneity in the analyses of metabolically unhealthy normal-weight and metabolically unhealthy obese persons. As such, these estimates might lack precision and should be interpreted with caution. Indeed, the high heterogeneity in the analyses of these subgroups may further reflect the wide variation in the absolute rates of events between studies shown in Table 2. We believe, however, that these limitations do not obscure the

main results of this meta-analysis. Finally, we recognize that publication bias and quality limitations of individual studies may still be relevant despite best efforts to conduct a comprehensive search and the lack of statistical evidence of bias.

Of note, our findings should be generalized carefully. Because higher BMI has been reported to confer lesser relative mortality risk in elderly persons than in young and middle-aged populations, our results might not be generalizable to older people (56, 57). Another consideration is that all studies in this meta-analysis evaluated participants in a community setting; thus, the results might not reflect the effect of BMI in an acute setting, such as critical care, where overweight and obesity have been reported to be protective in some studies (58). Conversely, however, the current results pertain to the majority of the general population.

In conclusion, our meta-analysis supports the concept of heterogeneity of metabolic status among individuals within the same BMI range. Metabolically healthy obese individuals are at increased risk for death and CV events over the long term compared with metabolically healthy normal-weight persons, suggesting that increased BMI is not a benign condition even in the absence of metabolic abnormalities. In addition, all metabolically unhealthy individuals (normal weight, overweight, obese) had increased risk for events compared with metabolically healthy normal-weight individuals. Thus, in evaluating CV and mortality risk, it is important to consider both BMI and metabolic status to reliably estimate long-term outcome.

From Leadership Sinai Centre for Diabetes, Mount Sinai Hospital; University of Toronto; and Lunenfeld-Tanenbaum Research Institute, Mount Sinai Hospital, Toronto, Ontario, Canada.

Grant Support: By intramural funds from the Leadership Sinai Centre for Diabetes. Dr. Kramer holds a Canadian Diabetes Association Postdoctoral Fellowship Award. Dr. Zinman holds the Sam and Judy Pencer Family Chair in Diabetes Research at Mount Sinai Hospital and University of Toronto. Dr. Retnakaran holds an Ontario Ministry of Research and Innovation Early Researcher Award.

Potential Conflicts of Interest: None disclosed. Forms can be viewed at www.acponline.org/authors/icmje/ConflictOfInterestForms.do?msNum=M13-1059.

Requests for Single Reprints: Ravi Retnakaran, MD, Leadership Sinai Centre for Diabetes, Mount Sinai Hospital, 60 Murray Street, Suite L5-025, Mailbox-21, Toronto, Ontario M5T 3L9, Canada; e-mail: rretnakaran@mtsinai.on.ca.

Current author addresses and author contributions are available at www.annals.org.

References

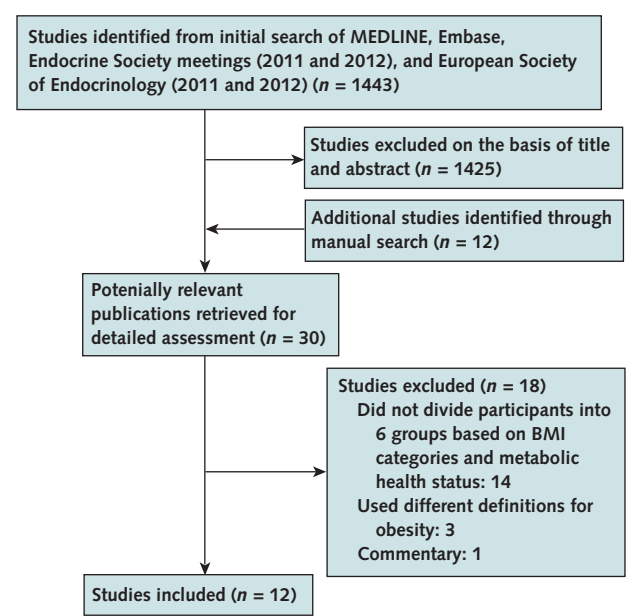
- Berrington de Gonzalez A, Hartge P, Cerhan JR, Flint AJ, Hannan L, MacInnis RJ, et al. Body-mass index and mortality among 1.46 million white adults. *N Engl J Med*. 2010;363:2211-9. [PMID: 21121834]
- Adams KF, Schatzkin A, Harris TB, Kipnis V, Mouw T, Ballard-Barbash R, et al. Overweight, obesity, and mortality in a large prospective cohort of persons 50 to 71 years old. *N Engl J Med*. 2006;355:763-78. [PMID: 16926275]
- Whitlock G, Lewington S, Sherliker P, Clarke R, Emberson J, Halsey J, et al; Prospective Studies Collaboration. Body-mass index and cause-specific mortality in 900 000 adults: collaborative analyses of 57 prospective studies. *Lancet*. 2009;373:1083-96. [PMID: 19299006]
- Flegal KM, Kit BK, Orpana H, Graubard BI. Association of all-cause mortality with overweight and obesity using standard body mass index categories: a systematic review and meta-analysis. *JAMA*. 2013;309:71-82. [PMID: 23280227]
- Wildman RP, Muntner P, Reynolds K, McGinn AP, Rajpathak S, Wylie-Rosett J, et al. The obese without cardiometabolic risk factor clustering and the normal weight with cardiometabolic risk factor clustering: prevalence and correlates of 2 phenotypes among the US population (NHANES 1999-2004). *Arch Intern Med*. 2008;168:1617-24. [PMID: 18695075]
- Ruderman N, Chisholm D, Pi-Sunyer X, Schneider S. The metabolically obese, normal-weight individual revisited. *Diabetes*. 1998;47:699-713. [PMID: 9588440]
- Karelis AD. Metabolically healthy but obese individuals. *Lancet*. 2008;372:1281-3. [PMID: 18929889]
- Meigs JB, Wilson PW, Fox CS, Vasan RS, Nathan DM, Sullivan LM, et al. Body mass index, metabolic syndrome, and risk of type 2 diabetes or cardiovascular disease. *J Clin Endocrinol Metab*. 2006;91:2906-12. [PMID: 16735483]
- Arnlov J, Ingelsson E, Sundström J, Lind L. Impact of body mass index and the metabolic syndrome on the risk of cardiovascular disease and death in middle-aged men. *Circulation*. 2010;121:230-6. [PMID: 20038741]
- Voulgari C, Tentolouris N, Dilaveris P, Tousoulis D, Katsilambros N, Stefanadis C. Increased heart failure risk in normal-weight people with metabolic syndrome compared with metabolically healthy obese individuals. *J Am Coll Cardiol*. 2011;58:1343-50. [PMID: 21920263]
- Stroup DF, Berlin JA, Morton SC, Olkin I, Williamson GD, Rennie D, et al. Meta-analysis of observational studies in epidemiology: a proposal for reporting. Meta-analysis Of Observational Studies in Epidemiology (MOOSE) group. *JAMA*. 2000;283:2008-12. [PMID: 10789670]
- Umpierre D, Ribeiro PA, Kramer CK, Leitão CB, Zucatti AT, Azevedo MJ, et al. Physical activity advice only or structured exercise training and association with HbA1c levels in type 2 diabetes: a systematic review and meta-analysis. *JAMA*. 2011;305:1790-9. [PMID: 21540423]
- Kramer CK, Zinman B, Retnakaran R. Short-term intensive insulin therapy and its impact on type 2 diabetes: a systematic review and meta-analysis. *Lancet Diabetes Endocrinol*. 2013;1:28-34.
- Gross JL, Kramer CK, Leitão CB, Hawkins N, Viana LV, Schaan BD, et al; Diabetes and Endocrinology Meta-analysis Group (DEMA). Effect of antihyperglycemic agents added to metformin and a sulfonylurea on glycemic control and weight gain in type 2 diabetes: a network meta-analysis. *Ann Intern Med*. 2011;154:672-9. [PMID: 21576535]
- Kramer CK, Leitão CB, Pinto LC, Canani LH, Azevedo MJ, Gross JL. Efficacy and safety of topiramate on weight loss: a meta-analysis of randomized controlled trials. *Obes Rev*. 2011;12:e338-47. [PMID: 21438989]
- Gilbert J, Raboud J, Zinman B. Meta-analysis of the effect of diabetes on restenosis rates among patients receiving coronary angioplasty stenting. *Diabetes Care*. 2004;27:990-4. [PMID: 15047662]
- Retnakaran R, Hochman J, DeVries JH, Hanaire-BROUTIN H, Heine RJ, Melki V, et al. Continuous subcutaneous insulin infusion versus multiple daily injections: the impact of baseline A1c. *Diabetes Care*. 2004;27:2590-6. [PMID: 15504991]
- Lee WL, Cheung AM, Cape D, Zinman B. Impact of diabetes on coronary artery disease in women and men: a meta-analysis of prospective studies. *Diabetes Care*. 2000;23:962-8. [PMID: 10895847]
- Expert Panel on Detection, Evaluation, and Treatment of High Blood Cholesterol in Adults. Executive Summary of The Third Report of The National Cholesterol Education Program (NCEP) Expert Panel on Detection, Evaluation, And Treatment of High Blood Cholesterol In Adults (Adult Treatment Panel III). *JAMA*. 2001;285:2486-97. [PMID: 11368702]
- Alberti KG, Eckel RH, Grundy SM, Zimmet PZ, Cleeman JI, Donato KA, et al; International Diabetes Federation Task Force on Epidemiology and Prevention. Harmonizing the metabolic syndrome: a joint interim statement of the International Diabetes Federation Task Force on Epidemiology and Prevention; National Heart, Lung, and Blood Institute; American Heart Association; World

- Heart Federation; International Atherosclerosis Society; and International Association for the Study of Obesity. *Circulation*. 2009;120:1640-5. [PMID: 19805654]
21. Shea JL, Randell EW, Sun G. The prevalence of metabolically healthy obese subjects defined by BMI and dual-energy X-ray absorptiometry. *Obesity (Silver Spring)*. 2011;19:624-30. [PMID: 20706202]
 22. Wells GA, Shea B, O'Connell D, Peterson J, Welch V, Losos M, et al. The Newcastle-Ottawa Scale (NOS) for assessing the quality of nonrandomised studies in meta-analyses. Ottawa Hospital Research Institute. Accessed at www.ohri.ca/programs/clinical_epidemiology/oxford.asp on 2 December 2012.
 23. Stang A. Critical evaluation of the Newcastle-Ottawa scale for the assessment of the quality of nonrandomized studies in meta-analyses. *Eur J Epidemiol*. 2010;25:603-5. [PMID: 20652370]
 24. Matthews DR, Hosker JP, Rudenski AS, Naylor BA, Treacher DF, Turner RC. Homeostasis model assessment: insulin resistance and beta-cell function from fasting plasma glucose and insulin concentrations in man. *Diabetologia*. 1985;28:412-9. [PMID: 3899825]
 25. Hardy RJ, Thompson SG. A likelihood approach to meta-analysis with random effects. *Stat Med*. 1996;15:619-29. [PMID: 8731004]
 26. Higgins JP, Thompson SG. Quantifying heterogeneity in a meta-analysis. *Stat Med*. 2002;21:1539-58. [PMID: 12111919]
 27. Higgins JP, Thompson SG, Deeks JJ, Altman DG. Measuring inconsistency in meta-analyses. *BMJ*. 2003;327:557-60. [PMID: 12958120]
 28. Moreno SG, Sutton AJ, Ades AE, Stanley TD, Abrams KR, Peters JL, et al. Assessment of regression-based methods to adjust for publication bias through a comprehensive simulation study. *BMC Med Res Methodol*. 2009;9:2. [PMID: 19138428]
 29. Peters JL, Sutton AJ, Jones DR, Abrams KR, Rushton L. Comparison of two methods to detect publication bias in meta-analysis. *JAMA*. 2006;295:676-80. [PMID: 16467236]
 30. Young TK, Gelskey DE. Is noncentral obesity metabolically benign? Implications for prevention from a population survey. *JAMA*. 1995;274:1939-41. [PMID: 8568989]
 31. Brochu M, Tchernof A, Dionne IJ, Sites CK, Eltabbakh GH, Sims EA, et al. What are the physical characteristics associated with a normal metabolic profile despite a high level of obesity in postmenopausal women? *J Clin Endocrinol Metab*. 2001;86:1020-5. [PMID: 11238480]
 32. Karelis AD, Faraj M, Bastard JP, St-Pierre DH, Brochu M, Prud'homme D, et al. The metabolically healthy but obese individual presents a favorable inflammation profile. *J Clin Endocrinol Metab*. 2005;90:4145-50. [PMID: 15855252]
 33. Stefan N, Kantartzis K, Machann J, Schick F, Thamer C, Rittig K, et al. Identification and characterization of metabolically benign obesity in humans. *Arch Intern Med*. 2008;168:1609-16. [PMID: 18695074]
 34. Succurro E, Marini MA, Frontoni S, Hribal ML, Andreozzi F, Lauro R, et al. Insulin secretion in metabolically obese, but normal weight, and in metabolically healthy but obese individuals. *Obesity (Silver Spring)*. 2008;16:1881-6. [PMID: 18551117]
 35. Tarantino G, Colicchio P, Conca P, Finelli C, Di Minno MN, Tarantino M, et al. Young adult obese subjects with and without insulin resistance: what is the role of chronic inflammation and how to weigh it non-invasively? *J Inflamm (Lond)*. 2009;6:6. [PMID: 19291292]
 36. Messier V, Karelis AD, Prud'homme D, Primeau V, Brochu M, Rabasa-Lhoret R. Identifying metabolically healthy but obese individuals in sedentary postmenopausal women. *Obesity (Silver Spring)*. 2010;18:911-7. [PMID: 19851302]
 37. Romero-Corral A, Somers VK, Sierra-Johnson J, Korenfeld Y, Boarin S, Korinek J, et al. Normal weight obesity: a risk factor for cardiometabolic dysregulation and cardiovascular mortality. *Eur Heart J*. 2010;31:737-46. [PMID: 19933515]
 38. Calori G, Lattuada G, Piemonti L, Garancini MP, Ragona F, Villa M, et al. Prevalence, metabolic features, and prognosis of metabolically healthy obese Italian individuals: the Cremona Study. *Diabetes Care*. 2011;34:210-5. [PMID: 20937689]
 39. Kantartzis K, Machann J, Schick F, Rittig K, Machicao F, Fritsche A, et al. Effects of a lifestyle intervention in metabolically benign and malignant obesity. *Diabetologia*. 2011;54:864-8. [PMID: 21174075]
 40. Khan UI, Wang D, Thurston RC, Sowers M, Sutton-Tyrrell K, Matthews KA, et al. Burden of subclinical cardiovascular disease in "metabolically benign" and "at-risk" overweight and obese women: the Study of Women's Health Across the Nation (SWAN). *Atherosclerosis*. 2011;217:179-86. [PMID: 21310415]
 41. Park J, Kim SH, Cho GY, Baik I, Kim NH, Lim HE, et al. Obesity phenotype and cardiovascular changes. *J Hypertens*. 2011;29:1765-72. [PMID: 21826021]
 42. Wildman RP, Kaplan R, Manson JE, Rajkovic A, Connelly SA, Mackey RH, et al. Body size phenotypes and inflammation in the Women's Health Initiative Observational Study. *Obesity (Silver Spring)*. 2011;19:1482-91. [PMID: 21233809]
 43. Hamer M, Stamatakis E. Metabolically healthy obesity and risk of all-cause and cardiovascular disease mortality. *J Clin Endocrinol Metab*. 2012;97:2482-8. [PMID: 22508708]
 44. Marques-Vidal P, Velho S, Waterworth D, Waeber G, von Känel R, Vollenweider P. The association between inflammatory biomarkers and metabolically healthy obesity depends of the definition used. *Eur J Clin Nutr*. 2012;66:426-35. [PMID: 21952696]
 45. Lee SK, Kim SH, Cho GY, Baik I, Lim HE, Park CG, et al. Obesity phenotype and incident hypertension: a prospective community-based cohort study. *J Hypertens*. 2013;31:145-51. [PMID: 23079679]
 46. Ortega FB, Lee DC, Katzmarzyk PT, Ruiz JR, Sui X, Church TS, et al. The intriguing metabolically healthy but obese phenotype: cardiovascular prognosis and role of fitness. *Eur Heart J*. 2013;34:389-97. [PMID: 22947612]
 47. Kip KE, Marroquin OC, Kelley DE, Johnson BD, Kelsey SF, Shaw LJ, et al. Clinical importance of obesity versus the metabolic syndrome in cardiovascular risk in women: a report from the Women's Ischemia Syndrome Evaluation (WISE) study. *Circulation*. 2004;109:706-13. [PMID: 14970104]
 48. Song Y, Manson JE, Meigs JB, Ridker PM, Buring JE, Liu S. Comparison of usefulness of body mass index versus metabolic risk factors in predicting 10-year risk of cardiovascular events in women. *Am J Cardiol*. 2007;100:1654-8. [PMID: 18036364]
 49. Kuk JL, Ardern CI. Are metabolically normal but obese individuals at lower risk for all-cause mortality? *Diabetes Care*. 2009;32:2297-9. [PMID: 19729521]
 50. Hosseini F, Barzin M, Sheikholeslami F, Azizi F. Effect of different obesity phenotypes on cardiovascular events in Tehran Lipid and Glucose Study (TLGS). *Am J Cardiol*. 2011;107:412-6. [PMID: 21257007]
 51. Lind L, Siegbahn A, Ingelsson E, Sundström J, Arnlöv J. A detailed cardiovascular characterization of obesity without the metabolic syndrome. *Arterioscler Thromb Vasc Biol*. 2011;31:e27-34. [PMID: 21546604]
 52. Pajunen P, Kotronen A, Korpi-Hyövähti E, Keinänen-Kiukkaanniemi S, Oksa H, Niskanen L, et al. Metabolically healthy and unhealthy obesity phenotypes in the general population: the FIN-D2D Survey. *BMC Public Health*. 2011;11:754. [PMID: 21962038]
 53. Ogorodnikova AD, Kim M, McGinn AP, Muntner P, Khan U, Wildman RP. Incident cardiovascular disease events in metabolically benign obese individuals. *Obesity (Silver Spring)*. 2012;20:651-9. [PMID: 21799477]
 54. McGee DL, Diverse Populations Collaboration. Body mass index and mortality: a meta-analysis based on person-level data from twenty-six observational studies. *Ann Epidemiol*. 2005;15:87-97. [PMID: 15652713]
 55. World Health Organization. Obesity and overweight fact sheet. March 2013. Accessed at www.who.int/mediacentre/factsheets/fs311/en/ on 9 August 2013.
 56. Heiat A, Vaccaro V, Krumholz HM. An evidence-based assessment of federal guidelines for overweight and obesity as they apply to elderly persons. *Arch Intern Med*. 2001;161:1194-203. [PMID: 11343442]
 57. Kvamme JM, Holmen J, Wilsgaard T, Florholmen J, Midtjell K, Jacobsen BK. Body mass index and mortality in elderly men and women: the Tromsø and HUNT studies. *J Epidemiol Community Health*. 2012;66:611-7. [PMID: 21321065]
 58. Abhyankar S, Leishear K, Callaghan FM, Demner-Fushman D, McDonald CJ. Lower short- and long-term mortality associated with overweight and obesity in a large cohort study of adult intensive care unit patients. *Crit Care*. 2012;16:R235. [PMID: 23249446]

Current Author Addresses: Dr. Kramer: Leadership Sinai Centre for Diabetes, Mount Sinai Hospital, 60 Murray Street, Suite L5-009, Mailbox-21, Toronto, Ontario M5T 3L9, Canada.
Dr. Zinman: Leadership Sinai Centre for Diabetes, Mount Sinai Hospital, 60 Murray Street, Suite L5-024, Mailbox-17, Toronto, Ontario M5T 3L9, Canada.
Dr. Retnakaran: Leadership Sinai Centre for Diabetes, Mount Sinai Hospital, 60 Murray Street, Suite L5-025, Mailbox-21, Toronto, Ontario M5T 3L9, Canada.

Author Contributions: Conception and design: C.K. Kramer, B. Zinman, R. Retnakaran.
Analysis and interpretation of the data: C.K. Kramer, B. Zinman, R. Retnakaran.
Drafting of the article: C.K. Kramer.
Critical revision of the article for important intellectual content: C.K. Kramer, B. Zinman, R. Retnakaran.
Final approval of the article: C.K. Kramer, B. Zinman, R. Retnakaran.
Statistical expertise: C.K. Kramer.
Obtaining of funding: B. Zinman.
Administrative, technical, or logistic support: B. Zinman.
Collection and assembly of data: C.K. Kramer, R. Retnakaran.

Appendix Figure 1. Summary of evidence search and selection.



BMI = body mass index.

Appendix Table 1. Characteristics of Excluded Studies After Full-Text Evaluation

Study, Year (Reference)	Sample Size	Subgroups Evaluated	Design	Primary Aim	Follow-up, y	Outcome	Conclusion	Reason for Exclusion
Young and Gelskey, 1995 (30)	2792 adults aged 18–74 y	Nonobese, noncentrally obese, and centrally obese	Cross-sectional	Investigate whether individuals who are overall obese but have low waist-to-hip ratios have unfavorable metabolic profile	NA	NA	Noncentral obesity is not metabolically benign	Evaluated only obese individuals
Brochu et al, 2001 (31)	43 postmenopausal women	Healthy and unhealthy obese	Cross-sectional	Investigate metabolic characteristics of healthy and unhealthy obese	NA	NA	Healthy obese persons had less visceral fat and earlier age-related onset of obesity	Evaluated only obese individuals
Karelis et al, 2005 (32)	88 postmenopausal women	Healthy and unhealthy obese	Cross-sectional	Investigate inflammatory state in healthy obese women	NA	NA	Healthy obese women had favorable inflammation profile compared with unhealthy obese women	Evaluated only obese individuals
Stefan et al, 2008 (33)	314 individuals	Normal-weight, overweight, and healthy and unhealthy obese	Cross-sectional	Characterize the metabolically healthy obese phenotype	NA	NA	There exists a metabolically healthy obese phenotype; this group had less ectopic liver fat than the unhealthy obese group	Did not stratify normal-weight and overweight participants according to metabolic status
Succurro et al, 2008 (34)	197 participants	Healthy and unhealthy normal-weight and obese	Cross-sectional	Investigate metabolic characteristics of healthy and unhealthy	NA	NA	Unhealthy normal-weight and obese individuals exhibited poorer β -cell function and metabolic profile compared with their healthy peers	Did not present data for individuals categorized as overweight
Tarantino et al, 2009 (35)	42 young obese participants	Healthy and unhealthy based on insulin resistance	Cross-sectional	Investigate inflammatory markers in metabolically healthy and unhealthy	NA	NA	C-reactive protein level, fibrinogen level, and spleen diameter were increased in young obese insulin-resistant patients	Evaluated only obese individuals
Messier et al, 2010 (36)	113 obese postmenopausal women	Healthy and unhealthy obese by different definition	Cross-sectional	Investigate metabolic profile in healthy obese by using different definitions	NA	NA	Body composition and metabolic profile vary according to definition of metabolically healthy/unhealthy	Evaluated only obese individuals
Romero-Corral et al, 2010 (37)	6171 participants from NHANES III	Healthy and unhealthy normal-weight (by proportion of body fat)	Prospective	Investigate metabolic characteristics and mortality in healthy and unhealthy	8.8	Total and CV mortality	Unhealthy normal weight is associated with adverse metabolic profile and, in women, with increased CV mortality compared with healthy individuals.	Evaluated obesity by body fat and included only normal-weight individuals
Calori et al, 2011 (38)	2011 middle-aged individuals	Healthy and unhealthy normal-weight plus overweight and obese	Prospective	Investigate whether metabolically healthy obese had increased mortality	15	All-cause mortality, CVD and cancer mortality	The healthy obese group had similar mortality rates compared with the healthy normal-weight plus overweight group	Combined normal-weight and overweight individuals as a single group
Kantartzis et al, 2011 (39)	262 nondiabetic individuals participated in a 9-mo lifestyle intervention program	Metabolically healthy obese and unhealthy	Interventional study (lifestyle)	Investigate metabolic variables after lifestyle intervention in healthy and unhealthy obese individuals	0.75	NA	Insulin sensitivity improved during the lifestyle intervention in unhealthy obese individuals	Evaluated only obese individuals
Khan et al, 2011 (40)	475 participants from the Study of Women's Health Across the Nation; women aged 45–58 y; no baseline CVD	Normal-weight and overweight plus obese (healthy and unhealthy)	Cross-sectional	Evaluate subclinical CVD	NA	NA	Metabolically healthy overweight/obese women had significantly greater subclinical CVD burden than normal-weight women	Combined overweight and obese individuals as a single group

Continued on following page

Appendix Table 1—Continued

Study, Year (Reference)	Sample Size	Subgroups Evaluated	Design	Primary Aim	Follow-up, y	Outcome	Conclusion	Reason for Exclusion
Park et al, 2011 (41)	2540 participants without CVD	Healthy and unhealthy normal-weight, overweight and obese	Cross-sectional	Investigate the effect of healthy obesity on cardiovascular structure and function	NA	NA	Healthy obesity was associated with subtle changes in left ventricular structure and function	Definition of obesity: BMI ≥ 25 kg/m ²
Wildman et al, 2011 (42)	1889 postmenopausal women from Women's Health Initiative Study	Healthy and unhealthy normal-weight and overweight plus obese	Cross-sectional	Investigate inflammatory markers in metabolically healthy and unhealthy	NA	NA	Healthy overweight/obese women had increased levels of inflammatory markers compared with normal-weight healthy women	Combined overweight and obese individuals as a single group
Hamer and Stamatakis, 2012 (43)	22 203 participants without baseline CVD	Healthy and unhealthy normal-weight plus overweight and obese	Prospective	Investigate whether metabolically healthy obese had increased mortality	7	All-cause mortality and CVD mortality	Healthy obese groups had similar mortality rates compared with healthy normal-weight plus overweight group	Combined normal-weight and overweight individuals as a single group
Marques-Vidal et al, 2012 (44)	881 obese individuals	Healthy obese by different definition	Cross-sectional	Investigate inflammatory state in healthy obese by using different definitions	NA	NA	Healthy obese individuals had decreased levels of C-reactive protein compared with unhealthy by all definitions. Interleukin-6 and tumor-necrosis factor- α also reduced depending on the definition	Evaluated only obese individuals
Lee et al, 2013 (45)	2352 participants without CVD	Healthy and unhealthy normal-weight, overweight and obese	Prospective	Investigate association between obesity phenotypes and incidence of hypertension	8	Incidence of hypertension	Healthy obese persons had increased risk for hypertension	Definition of obesity: BMI ≥ 25 kg/m ²
Ortega et al, 2013 (46)	21 651 participants without baseline CVD	Healthy normal-weight, healthy and unhealthy and obese	Prospective	Investigate the fitness of these groups and whether metabolically healthy obese had increased mortality	14.3	All-cause mortality, CVD and cancer mortality	Metabolically healthy obese phenotype is associated with greater fitness; mortality did not significantly differ between metabolically healthy obese and healthy normal-weight participants	Did not present data for individuals categorized as overweight or obese; provide crude data

BMI = body mass index; CV = cardiovascular; CVD = cardiovascular disease; NA = not applicable; NHANES = National Health and Nutrition Examination Survey.

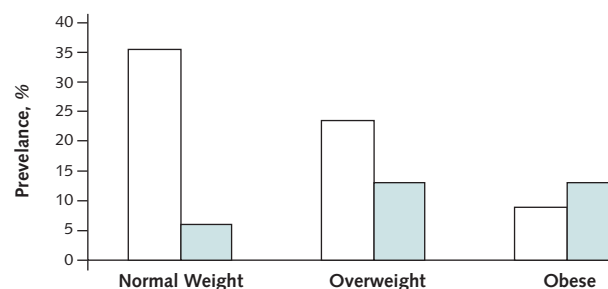
Appendix Table 2. Newcastle–Ottawa Quality Assessment Scale for Cohort Studies†

Study, Year (Reference)	Selection	Comparability	Outcome
Kip et al, 2004 (47)	***	*	**
Meigs et al, 2006 (8)	****	*	***
Song et al, 2007 (48)	***	*	***
Wildman et al, 2008 (5)	****	*	NA
Kuk and Ardern, 2009 (49)	****	*	***
Arnlov et al, 2010 (9)	***	*	***
Hosseinpanah et al, 2011 (50)	****	*	***
Lind et al, 2011 (51)	****	*	NA
Pajunen et al, 2011 (52)	****	*	NA
Shea et al, 2011 (21)	****	*	NA
Voulgari et al, 2011 (10)	****	*	***
Ogorodnikova et al, 2011 (53)	****	*	***

NA = not applicable.

† Asterisks reflect the score given to each domain as explained in the Methods section.

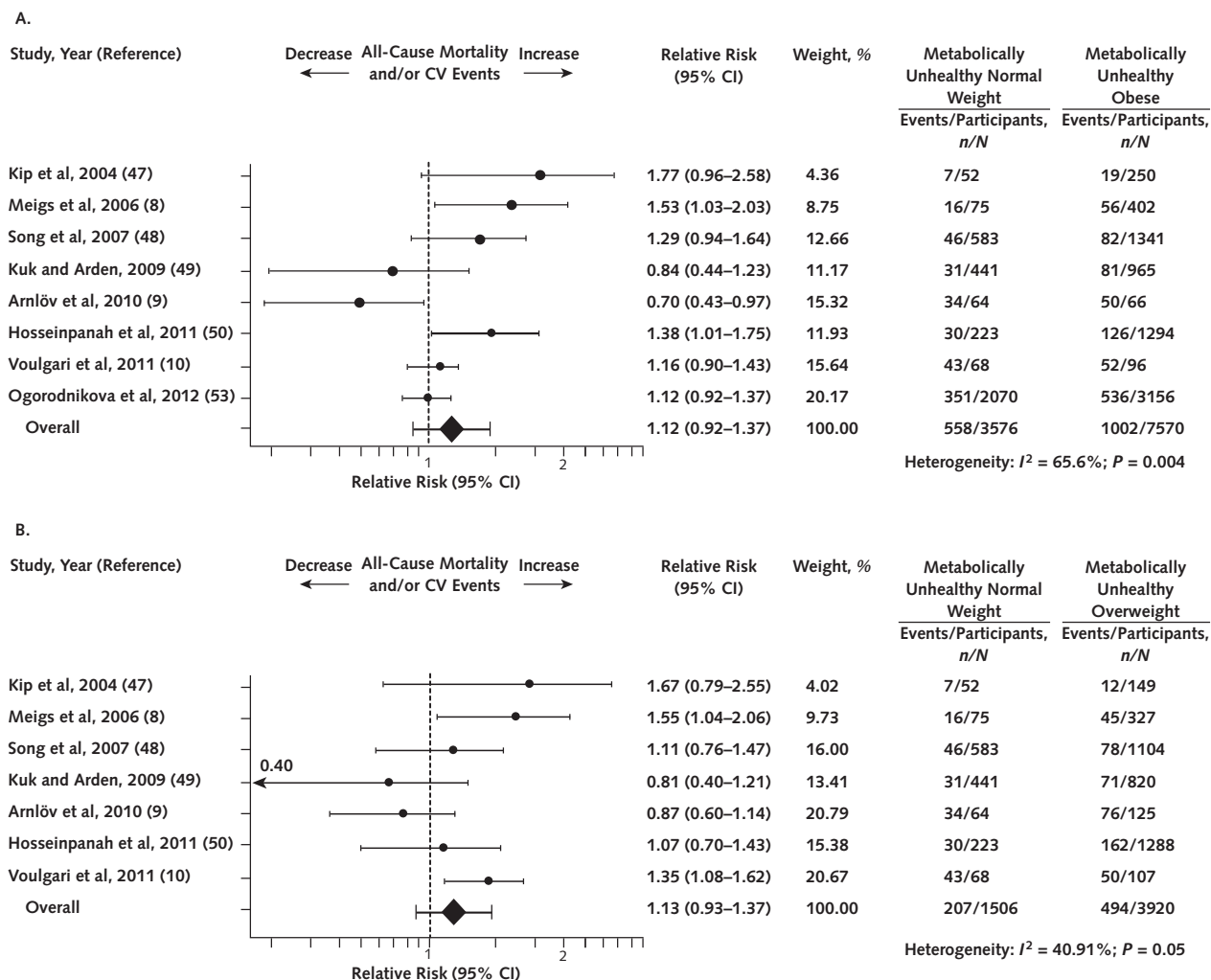
Appendix Figure 2. Prevalence of metabolically healthy and unhealthy individuals in normal-weight, overweight, and obese groups.



Appendix Table 3. Distribution of Participants, by Body Mass Index Category and Metabolic Status

Study, Year (Reference)	Normal Weight, n (%)		Overweight, n (%)		Obese, n (%)	
	Metabolically Healthy	Metabolically Unhealthy	Metabolically Healthy	Metabolically Unhealthy	Metabolically Healthy	Metabolically Unhealthy
Kip et al, 2004 (47)	132 (16.9)	52 (6.6)	120 (15.4)	149 (19.1)	77 (9.8)	250 (32)
Meigs et al, 2006 (8)	981 (33.8)	75 (2.6)	881 (30)	327 (11.2)	236 (8.1)	402 (13.9)
Song et al, 2007 (48)	12 943 (50.5)	583 (2.3)	6730 (26.3)	1104 (4.3)	2925 (11.4)	1341 (5.2)
Wildman et al, 2008 (5)	1429 (26.3)	440 (8)	978 (17.9)	925 (17)	528 (9.7)	1140 (20.9)
Kuk and Ardern, 2009 (49)	1938 (32.2)	441 (7.3)	1158 (19.3)	820 (13.6)	689 (11.5)	965 (16)
Arnlov et al, 2010 (9)	891 (50.7)	64 (3.6)	582 (33.1)	125 (7.1)	30 (1.7)	66 (3.7)
Hosseinpanah et al, 2011 (50)	1555 (25)	223 (3.6)	1447 (23.3)	1288 (20.7)	408 (6.6)	1294 (20.8)
Lind et al, 2011 (51)	319 (32.4)	19 (1.9)	333 (33.8)	94 (9.5)	102 (10.3)	118 (12)
Pajunen et al, 2011 (52)	712 (25)	205 (7.2)	418 (14.7)	811 (28.5)	94 (3.3)	609 (21.4)
Shea et al, 2011 (21)	456 (23.9)	146 (7.6)	367 (19.2)	220 (11.5)	339 (17.7)	379 (19.9)
Voulgari et al, 2011 (10)	109 (19.8)	68 (12.4)	127 (23)	107 (19.4)	43 (7.8)	96 (17.4)
Ogorodnikova et al, 2011 (53)	4036 (23)	2070 (11.8)	7115 (40.5)		1167 (6.6)	3156 (17.9)

Appendix Figure 3. Meta-analyses of unhealthy normal-weight phenotype for the risk for all-cause mortality and cardiovascular events compared with metabolically unhealthy obese (A) and metabolically unhealthy overweight (B) persons.



CV = cardiovascular.